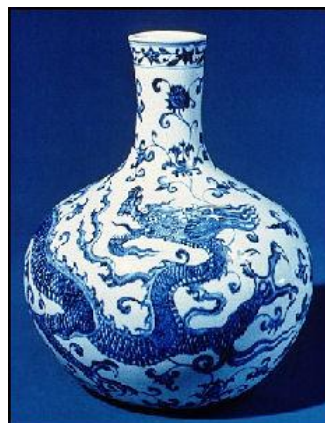

Art Masterpiece: 15thc Blue and White Japanese Porcelain

- Artist Unknown

Keywords: Porcelain, Glaze, Kiln

Grade: 1st Grade

Activity: Traditional Japanese Plate
Using Oil Pastels



Meet the Artwork:

On a voyage to the Philippines, back in the 1400's, the cargo ship "The Lena" wrecked and lost all its cargo. In 1997, at the depth of 50 meters, the Japanese dishes were discovered. Japanese pottery and **porcelain** is one of the country's oldest art forms, it dates back to the Neolithic (Stone Age) period. Pottery is made from a clay that is shaped into tableware (plate, bowl or cup) or vase, which then is baked in a **kiln** (oven, furnace) and **glazed** and painted.

The development of the pottery art was stimulated in the 16th century because of the widespread popularity of the tea ceremony. The **Japanese tea ceremony**, also called the **Way of Tea**, is a Japanese cultural activity involving the ceremonial preparation and presentation of powdered green tea. Thanks to the importance of the Tea ceremony many new kilns were opened in various parts of the country.

Tobe-yaki pottery was born in Tobe Town, surrounded by the beautiful mountains, about 320 years ago. Tobe pottery is characterized by indigo blue color on white porcelain. The porcelain is rather thick and the painted designs are simple. The simple features of the pottery are loved by Japanese who use it daily as tableware, vases and ornaments. In recent years, Tobe pottery has become popular for drinking coffee and for eating western style foods. Today, there are over 70 kilns, and visitors come here to experience making their own original work!

Keywords:

Glazing- coating a dish in a layer of special substance which makes it waterproof, adds strength and beauty. Although glaze technique was introduced to Japan from China in the 8th century, until the 17th century only unglazed stoneware was popular in an everyday life.

Kiln - a type of oven, that produces temperatures of 1000°C , required for the process of hardening or drying. Various industries use kilns to harden objects made from clay into pottery, bricks etc.

Porcelain (type of pottery) - is a material made from a special white clay of kaolin & quartz powder, used for creating beautiful dinnerware such as, plates, cups, vases and ornaments.



Painting and Glazing

Activity: Creating "Traditional Japanese" designed paper plate

Materials: 8 $\frac{3}{4}$ inch Hefty "Diamond" brand paper plates (Costco), pencils, blue oil pastels (one per student), lotus flower and dragon templates, copied and cut out from cardstock paper (2 ea. per/table), spray glaze (or diluted glue).

Process:

1. Have students write their name on the back of the paper plate.
2. Students will use pencil to trace the template shape onto the center of their plate.
3. Using a blue oil pastel, instruct students to go over their traced design. Color in as desired: adding lines for the petals of the flower or eyes and scales for the dragon, etc.
4. Draw vines and flames on the white board as an example for embellishment.
5. Encourage students to add details around their plate such as vines, leaves, smaller flowers flames, squiggly lines or anything they wish.
6. Volunteer and/or teacher can coat each plate (outside) with a layer of "spray glaze" to give plates a glossy look (optional, only if time permits).
7. If using diluted glue, be sure to prepare ahead of time.

Lotus Flower & Dragon Template
(with vines & flame design)

