

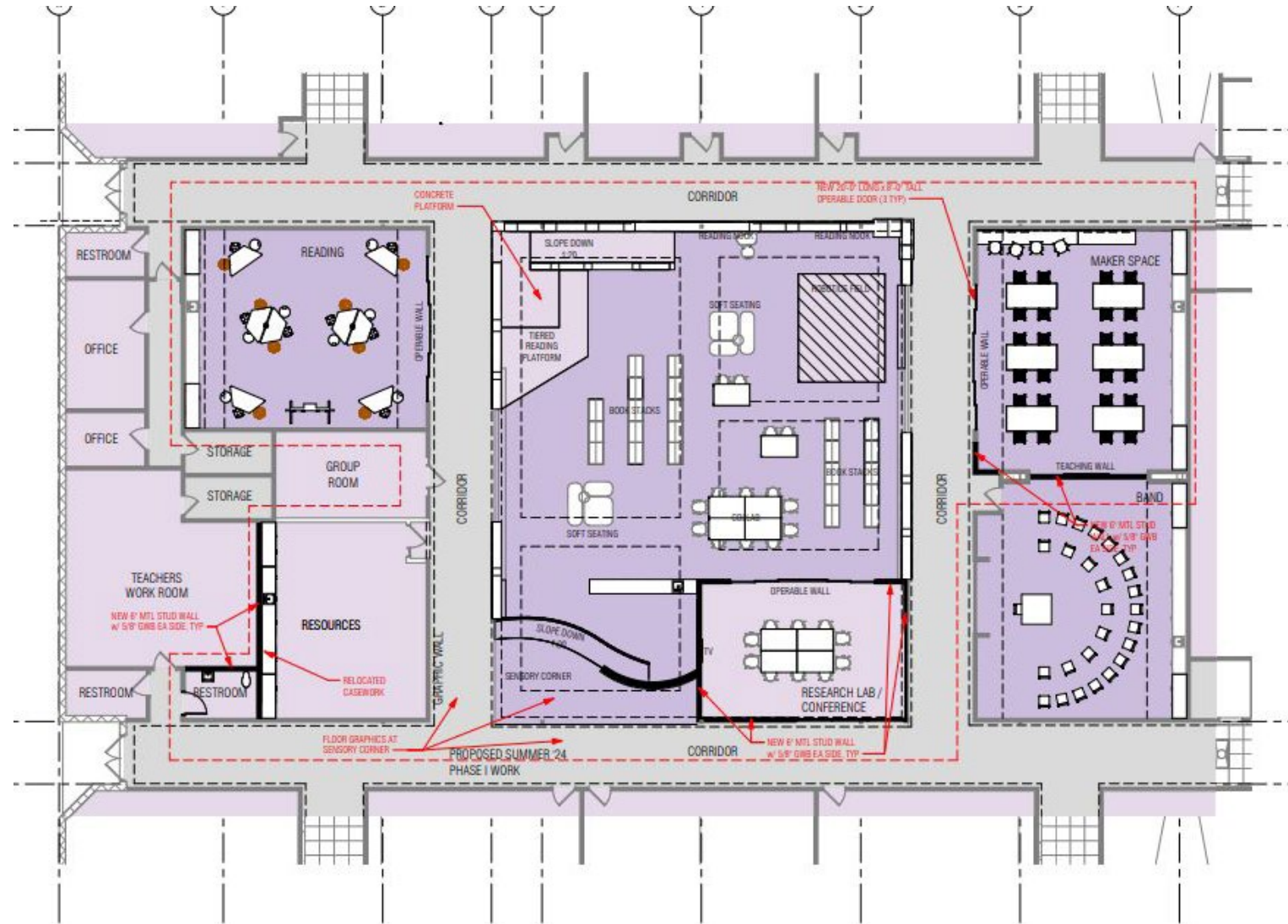
Re-Imagining Update

Frye Elementary



Frye Elementary

- Foster Space to replication activities and programming such as the ASU Innovation Center
- MakerSpace/STEM opportunities for student collaboration and Problem-based Learning (PBL)





Frye – Conference Room

Frye – Hex Corner Spaces





Frye – MakerSpace &
Ramp

Frye – Timeline

Frye Elementary School	DURATION	START DATE	END DATE
Master Plan and Phase I Schematic Design	10 WEEKS	Oct 3, 2023	Nov 29, 2023
Tour of WGA Makerspace		Oct 3, 2023 Actual: 10/9	In-Person Complete
Meeting 1 – Tour of School Review Immediate Needs Develop Program Discuss Future Needs		Oct 4, 2023 Actual: 10/10	In-Person Complete
Meeting 2 –Review Future Space Needs Program, Discuss Initial Concept		Oct 18, 2023 Actual: 10/25	In-Person Complete
Meeting 3 – Review Concepts		Nov 1, 2023 Actual: 11/9	Virtual Complete
Meeting 4 – Review Concepts & Phasing Recommendations		Nov 15, 2023 Actual: 11/29	Virtual Complete
Meeting 5 – Review Finalized Report		Dec 12, 2023 Actual: 12/13	Virtual Complete
CONSTRUCTION DOCUMENTS	6 WEEKS		
Library and Collaboration Phase I – Summer Improvements		Dec 13, 2023	Feb 16, 2024
Meeting 6 – Review Interior Items finishes, power, data & furniture		Jan 16, 2024 To be Confirmed	
Meeting 7 - Furniture		Feb 7, 2024	
Furniture Order DUE DATE			To Be Confirmed
JOC GMP	4 WEEKS	Feb 16, 2024	Mar 8, 2024
Spring Break		Mar 11, 2024	Mar 16, 2024
CONSTRUCTION ADMINISTRATION Concord will provide a detailed schedule	18 WEEKS	TBC	TBC
Subcontracts, Submittals			
Punch Walk			Jun 25, 2024
Substantial Completion			Jul 2, 2024
Final Completion			Jul 10, 2024
First Day of School			Jul 17, 2024