

SALVADOR DALI

(1904 – 1989)

DALÍ WAS VERY UNIQUE IN HIS APPEARANCE, ALWAYS WEARING A LONG CAPE, CARRYING A WALKING STICK, AND HAVING A HUGE, WAXED MUSTACHE. WHEN HE SIGNED AUTOGRAPHS, HE ALWAYS KEPT PEOPLE'S PENS.





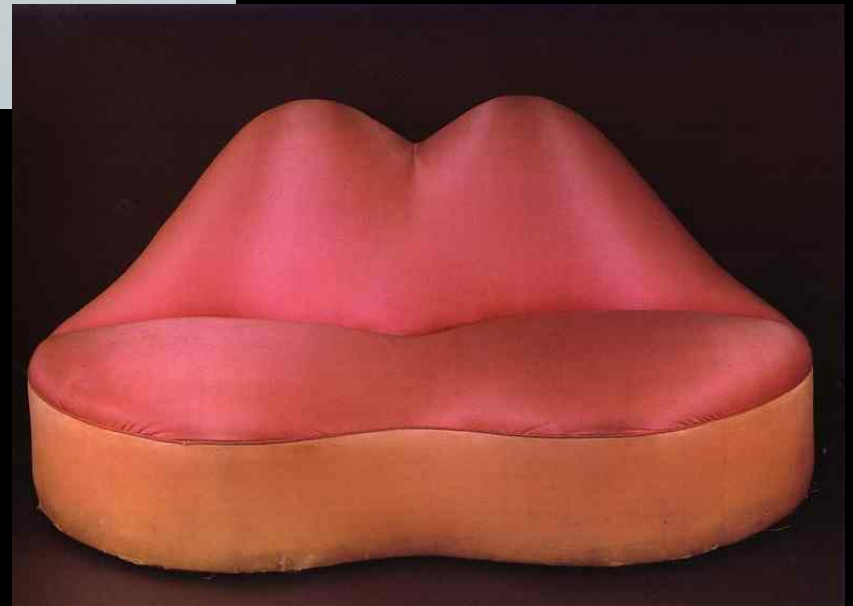
LOBSTER TELEPHONE (1936)

(YES, IT WORKED)

MAE WEST LIPS SOFA (1936)

**(MAE WEST WAS A FAMOUS
ACTRESS WHOSE LIPS DALÍ
FOUND INTERESTING)**

**ASIDE FROM PAINTING, DALÍ
CREATED SCULPTURES AND
OTHER OBJECTS, DABBLED IN
THEATER, FASHION AND
PHOTOGRAPHY. HE WAS HIRED
BY A WEALTHY ART PATRON TO
CREATE THESE TWO WORKS OF
ART FOR HIS MANSION:**





AFTER WORLD WAR II ENDED, HE RETURNED TO SPAIN. HE HAD BECOME INTERESTED IN OPTICAL ILLUSIONS AS A WAY OF CREATING FALSE REALITY. IF YOU LOOK CLOSELY AT THIS PHOTO, YOU CAN SEE THE WIRES HOLDING UP THE OBJECTS (SOMETHING WE CAN DO NOW WITH COMPUTERS!) DALÍ HIMSELF IS THE MAN IN MID AIR IN THE CENTER OF THE PHOTO.

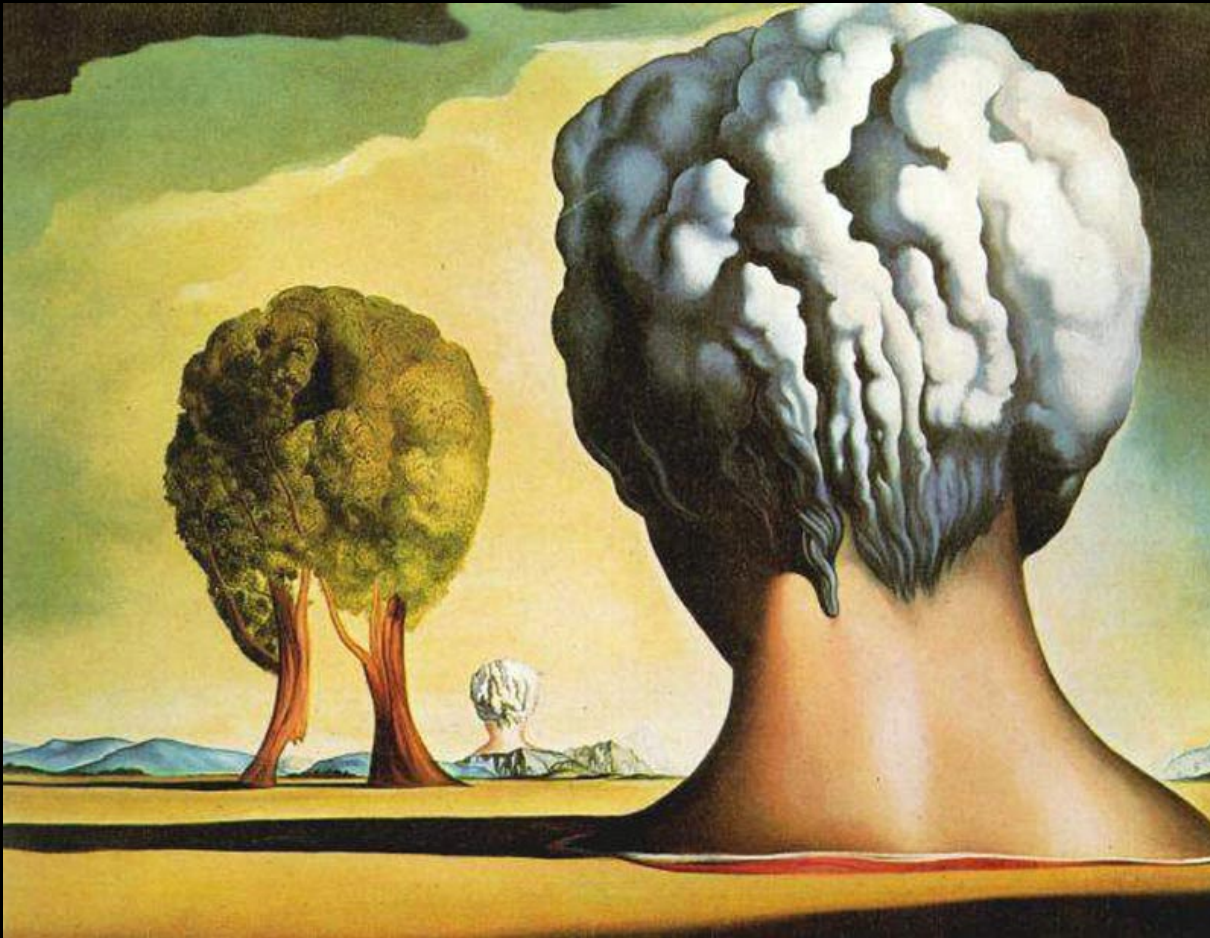
THE DALI ATOMICUS, PHOTO BY PHILIPPE HALSMAN
(1948)



SLEEP (1937)



SWANS REFLECTING ELEPHANTS (1937)



BIKINI ATOLL WAS A STRING OF ISLANDS WHERE NUCLEAR TESTING WAS DONE IN THE 1940S. THIS PAINTING IS SAID TO DEPICT THE THREE "HEADS" OF HUMANITY (THE HUMAN HEAD), NATURE (THE TREES) AND DESTRUCTION (THE MUSHROOM CLOUD IN THE DISTANCE).

THREE SPHINXES OF BIKINI (1947)



THE PERSISTENCE OF MEMORY (1931)