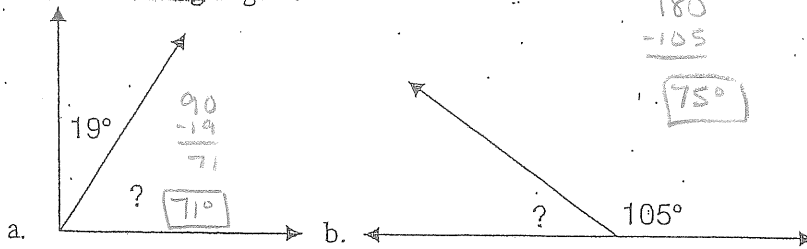


Practice WS 10.1

1. Find the missing degree.



2. Find the measure of the complement and the supplement of each angle:

- a. 45.5° b. 87° c. 21.5° d. 5°
- Handwritten calculations: $44.5 / 134.5$, $3 / 93$, $68.5 / 158.5$, $85 / 175$

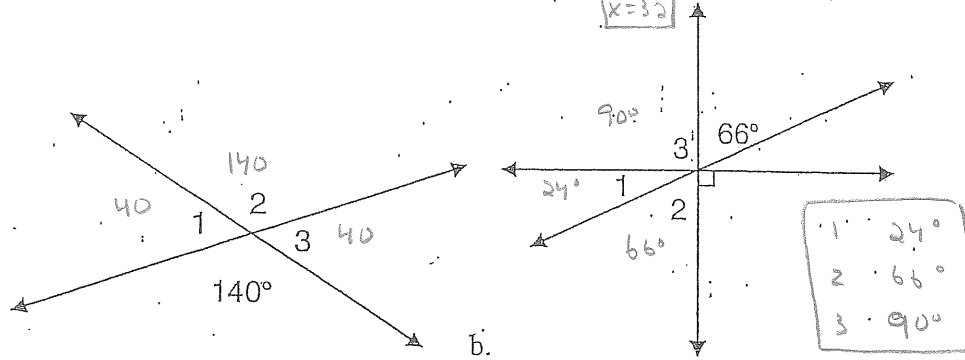
3. Find the measure of the angle described by the following: the measure of the angle is 26° greater than its complement.

$$x + x + 26 = 90$$

4. Find the measures of the angles 1, 2, and 3:

$$2x = 64$$

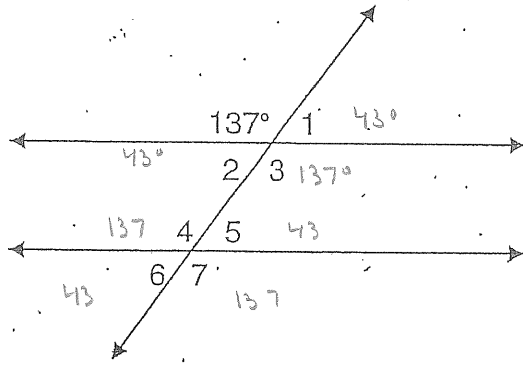
$$x = 32$$



1	40
2	140
3	40

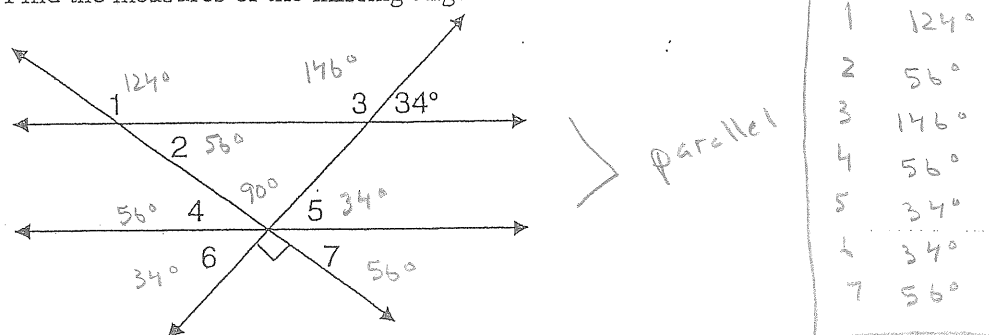
1	24°
2	66°
3	90°

5. Find the measures of the missing angles:

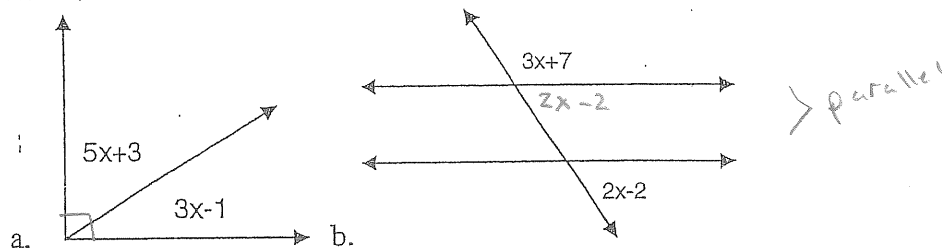


1	43°
2	137°
3	137°
4	137°
5	43°
6	43°
7	137°

6. Find the measures of the missing angles.



7. Use an algebraic equation to find the measure of each angle that is represented in terms of x .



$$5x + 3 + 3x - 1 = 90$$

$$8x + 2 = 90$$

$$8x = 88$$

$$x = 11$$

$$3x + 7 + 2x - 2 = 180$$

$$5x + 5 = 180$$

$$5x = 175$$

$$x = 35$$