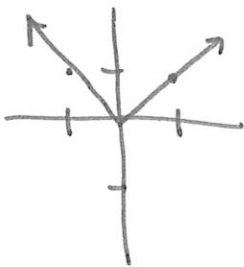


2.7 Standard form for absolute value.

$$y = -a | b(x-h) | + k$$

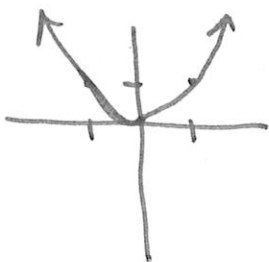
flip over x-axis (pointing to -a)
 flip (reflect) over y-axis (pointing to b)
 horizontal stretch (pointing to (x-h))
 vertical stretch (pointing to a)
 opposite (pointing to b)
 (pointing to k)

$f(x) = |x|$ Absolute value parent function



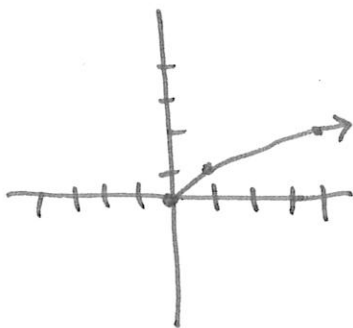
x	x
-1	1
0	0
1	1

$f(x) = x^2$ parabola parent function



x	x^2
-1	1
0	0
1	1

$f(x) = \sqrt{x}$



x	sqrt(x)
0	0
1	1
4	2