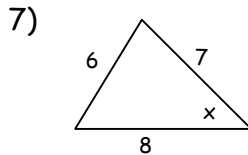
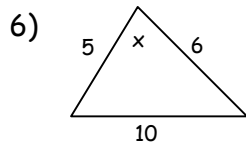
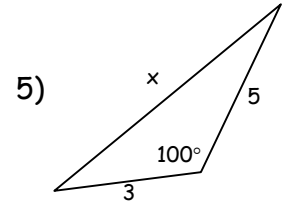
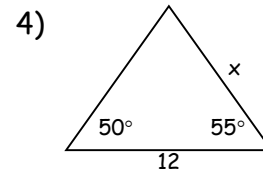
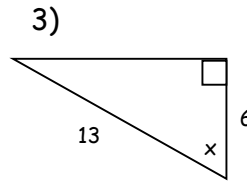
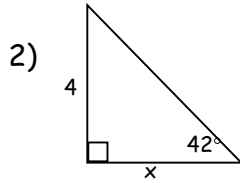
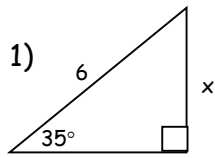


## Trigonometry Review

Solve for  $x$ . All sides are in feet.



Draw a picture, write a trig equation, then solve.

8) A plane is 5000ft in the air, and 30,000ft from an airport. Find the angle of depression from the plane to the airport.

9) A weather balloon is west of 2 observation stations. The stations are 10km apart. The angle of elevation to the balloon from the station furthest from the balloon is  $17^\circ$ , while the angle of elevation from the other station to the balloon is  $78^\circ$ . How high is the balloon?

10) Find the angle of elevation of the sun when a 6ft. man casts a 7ft. 6in. shadow.

11) The measures of 2 angles of a  $\Delta$  are  $35^\circ$  and  $65^\circ$ , and the length of the longest side of the  $\Delta$  is 36 cm. Find the length of the shortest side of the  $\Delta$ .

Chapter 15 p. 861-863 #2, 12-17, 24-27

Chapter 11 p. 668-671 #4, 6, 18, 19, 20, 21, 27, 30, 35, 39, 43, 49, 51, 55, 59, 61, 63, 75, 91

Chapter 12 p. 738-740 #8 - Find the mean, median, mode, range, midrange, standard deviation, 37, 39, 47, 53, 68, 69