

Pg 738-740 Ch. Review 9-10, 26-29, 34-49, 52-55, 59, 68

9) mean 17
 median 11
 mode 27
 midrange 19.5
 range 27
 st. dev 10.38

10) mean 2.3
 median 2
 mode 2
 midrange 2.5
 range 3
 st dev. .95

26) $\bar{x} = 7$

	$x - \bar{x}$	$(x - \bar{x})^2$
3	-4	16
3	-4	16
5	-2	4
8	1	1
10	3	9
13	6	36
		$\Sigma = 82$

$$s = \sqrt{\frac{82}{8}} = 4.05$$

27) $\bar{x} = 28$

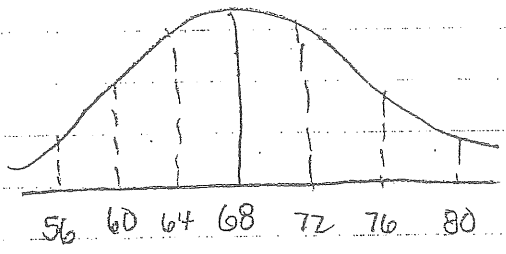
	$x - \bar{x}$	$(x - \bar{x})^2$
20	-8	64
27	-1	1
23	-5	25
26	-2	4
28	0	0
32	4	16
33	5	25
35	7	49
		$\Sigma = 184$

$$s = \sqrt{\frac{184}{7}} = 5.13$$

28) mean = 49
 range = 76
 st dev = 24.32

29) Set A mean = 80 st. dev = 0 Both have the same mean. B
 Set B mean = 80 st. dev = 10 has a higher st dev as the
 scores are more spread out

- 34) 68%
- 35) 95%
- 36) 34%
- 37) 99.7%
- 38) 16%
- 39) 84% (50+34)
- 40) 2.5%



41) $z = \frac{50-50}{5} = 0$

42) $z = \frac{60-50}{5} = 2$

43) $z = \frac{58-50}{5} = 1.6$

44) $z = \frac{35-50}{5} = -3$

45) $z = \frac{44-50}{5} = -1.2$

46) Vocab: $\frac{60-50}{5} = 2$

Grammar: $\frac{80-72}{6} = 1.3$

student did better on vocab (at a high st dev, so there are fewer people who scored above her)

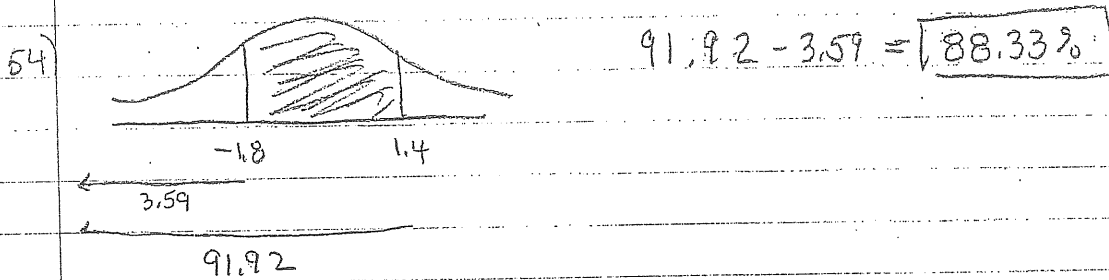
47) $1.5 = \frac{x-32000}{4000}$ $x = 38,000$

48) $2.25 = \frac{x-32,000}{4000}$ $x = 41,000$

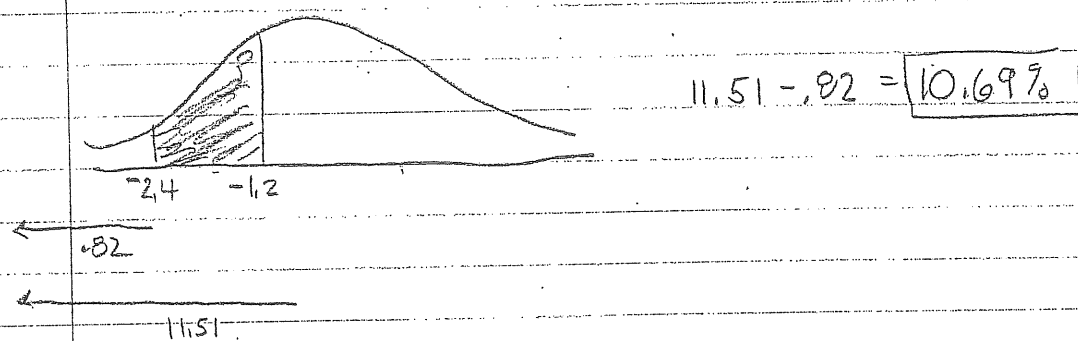
49) $-2.5 = \frac{x-32000}{4000}$ $x = 22,000$

52) $z = \frac{221 - 200}{15} = 1.4$ 91.92%

53) $z = \frac{173 - 200}{15} = -1.8$ 100 - 3.59 = 96.41%



55) $z = \frac{164 - 200}{15} = -2.4$ $z = \frac{182 - 200}{15} = -1.2$



59)

a)

b) $r = .97$

c) $y = .51x + .54$

d) There is a pos corr between x and y

60) c