



**Chandler Unified School District No. 80**  
**Community Education Department**



# **TARWATER ELEMENTARY**

*2300 S. Gardner Drive, Chandler, AZ 85286*

## **GENERAL INFORMATION**

Dates: Mon., June 3 -Fri., June 21, 2024

Elementary Summer Academy Enrichment Coordinator: Liana Claeson

Email Address: [Claeson.Liana@cusd80.com](mailto:Claeson.Liana@cusd80.com)

**Register online:** [Summer Academy](#) **with a credit/debit card or checking account.**

- Select 'Summer Academy Enrichment Class Registration' then scroll down to make your course selection and choose 'Enroll Now'.
- Existing customers should then Log in to complete registration and pay for the course.
- If you're registering for a class and DO NOT have an existing account, please select 'Create one now'. website [www.cusd80.ce.eleyo.com](http://www.cusd80.ce.eleyo.com)

Community Education SA office hours: Monday - Thursday from 7:30am-4:30pm

1525 W. Frye Road, Chandler, AZ 85224 Tel: (480) 224-3919

**Cancellations on/before April 15th -5% processing fee applies\*\* Cancellations April 16th--April 30th-50% Refund**  
**\*\* NO REFUNDS ON/AFTER MAY 1ST .**

**REGISTRATION CLOSES Thurs. May 30th**

**\*\*\* For Incoming Kinders: \*\*\*** Students MUST be toilet/ potty-trained\*

**\*Pull-ups are not permitted.** To be considered potty-trained, a child must be able to do ALL of the following:

-Tell an adult they must go potty BEFORE they have to go (They must be able to say the words "I have to go potty.")

-Can INDEPENDENTLY pull down their underwear and pants and pull them back up when done; -Can INDEPENDENTLY clean their bottoms after using the toilet; -Get off the toilet by themselves; -Wash and dry their hands

-Postpone going if they must wait for someone who is in the bathroom or if outside and away from the classroom

- **Childcare K-6:** Kids Express (KE) will offer reduced pricing day camp for Summer Academy students that are enrolled in 2 classes **from** 8:25am-12pm. Kids Express-Basha El. site will transport from that location to Tarwater El. and back to KE Basha El. at **8:25am AND 12:00pm**. **There is no transportation for classes prior to 8:25am or for students enrolled in 1 class only.**

Please contact Kids Express or log into your Eleyo account to request childcare. Enrollment option is 'Summer Learning/Academy Extended Care'. **REGISTRATION OPENS FEBRUARY 20th.**

## Elementary Summer Academy Tips & Things to Know

- **ENROLLMENT:** Summer Academy( SA) courses will only be carried upon sufficient enrollment. If a class is canceled, no worries! We offer a full refund or you can simply select a different class for your child. Just give us a call or email us and let us know.
- **ATTENDANCE & GRADES:** Elementary courses are designed to enhance and enrich learning. During the summer program, teachers check and monitor attendance daily. Although we would like students to attend everyday, attendance is not mandatory. In addition, students will not receive an official grade in any of the courses.
- Students will have practice assignments to enhance the daily concepts taught during the program. However, no grades or report cards are given in Summer Academy. Homework is not given unless specified by a class.
- **CODE OF CONDUCT:** During the summer session, all students are expected to adhere to Chandler Unified School District's (CUSD) Code of Conduct. Uniforms are not necessary.
- **DRESS CODE:** Students are expected to adhere to the CUSD Dress Code. For dress code violations, students will contact their parents for a change of clothing. Repeat occurrences will result in a parent meeting.
- **MAPS:** Summer Academy is very similar to the regular school year. Students arrive on the first day a little nervous and apprehensive. Classroom assignments and locations will be available the first day of class in the entrance area to the campus. Knowing the exact name of the class will make it much easier in finding the classroom.
- Please be patient and understanding during the first couple of days as we work to get your child settled in their class. Please note that walking your child directly to their class will be permitted on the two days only.
- Transportation services are **not** available. Students are expected to be picked up on time at the conclusion of their class. Upon the 3<sup>rd</sup> late pickup, the student will be dis-enrolled. If for some reason you are delayed due to an emergency or unforeseen circumstance, please contact the SA office at the site to notify us as soon as possible. Parent drop-off and pick-up area- Cars must enter the South parking from South Gardner Drive.
- **Childcare:** Enroll in 'Summer Learning/Academy Extended Care' through your Kids Express Eleyo account. Transportation provided from Kids Express Basha El site to Tarwater El. for students enrolled in 2 classes from 8:25am-12pm. If students opt to remain with Kids Express on camp days, the full daily Kids Express rate will apply.
- We are staffed with a health assistant. However, you must submit a doctor's order for any health issues along with proper medication.
- In order for your child to receive the most help during the summer session, please provide the teacher with the most current IEP/504 for your child. Also, consult with your child's special education teacher to see if he/she qualifies for Extended School Year (ESY) support.
- Summer Academy can help with retention of materials; however, it will not replace a teacher's recommendation for retention.
- If your child is on a waiting list for a CTA school, he/she is **NOT** eligible to attend SA CTA courses.
- Our CTA Summer Academy courses are best for students already enrolled in a CTA school that may be struggling or students new to a CTA school.
- Staff is available to escort students from their 1st session class to their 2nd session class if applicable. They will also ensure your child is escorted to the designated parent pick up area or childcare at the conclusion of their last class.
- Make sure your child brings a bottle of water and a snack/ lunch daily.
- Please be patient and courteous during student drop off and pick up. ALWAYS use the crosswalk and please remember that student safety is our number one concern!

## Elementary Academic & Enrichment Courses (Grades K-6th)



**Digital Storytelling:** This class is designed for students entering 2<sup>nd</sup> through 3<sup>rd</sup> grades. Students will use Storybird to create a digitally illustrated story. This class will engage students in the writing process while creating a digital storyboard accessible anywhere.

| Storytelling               | Grades                                    | Location       | Time             | Dates    | Fees  | Min/Max |
|----------------------------|---|----------------|------------------|----------|-------|---------|
| <a href="#">ENROLL NOW</a> | Entering 2 <sup>nd</sup> -3 <sup>rd</sup> | Tarwater Elem. | 10:15 am - 12 pm | 6/3-6/21 | \$160 | 15/20   |



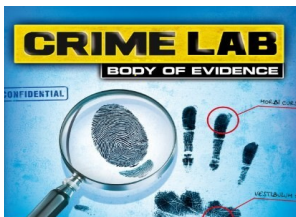
**Coding for Kids:** This class is designed for students entering 4<sup>th</sup> through 6<sup>th</sup> grades. Every student in every school should have the opportunity to learn computer science. This class will teach students the basics of coding. They will use programs such as Bitsbox and Code.org to create animations with increasing levels of complexity.

| Coding                     | Grades                                    | Location       | Time               | Dates    | Fees  | Min/Max |
|----------------------------|---|----------------|--------------------|----------|-------|---------|
| <a href="#">ENROLL NOW</a> | Entering 4 <sup>th</sup> -6 <sup>th</sup> | Tarwater Elem. | 8:25 am - 10:10 am | 6/3-6/21 | \$160 | 15/20   |



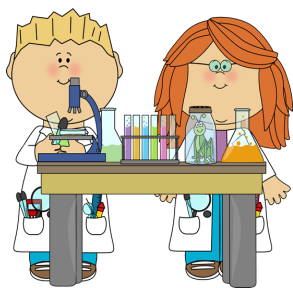
**Lights, Camera, Action!** This class is designed for students entering 1<sup>st</sup> through 3<sup>rd</sup> grades. In this class students will become onstage actors! Groups of students will select a script, rehearse their piece, and perform before an audience. Students will develop their reading fluency and improve their comprehension by engaging the reader in a dynamic performance.

| Lights                     | Grades                                    | Location       | Time               | Dates    | Fees  | Min/Max |
|----------------------------|---|----------------|--------------------|----------|-------|---------|
| <a href="#">ENROLL NOW</a> | Entering 1 <sup>st</sup> -3 <sup>rd</sup> | Tarwater Elem. | 8:25 am - 10:10 am | 6/3-6/21 | \$160 | 15/20   |



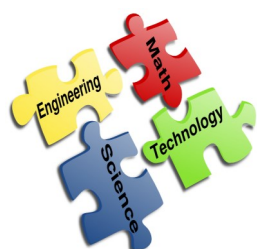
**Crime Lab:** This class is designed for students entering grades 4<sup>th</sup> through 6<sup>th</sup>. Do you love a good mystery? Have you always wanted to be a detective? This class provides students with an engaging and educational experience while investigating a mystery. Students will use real-life application of the scientific inquiry process to solve a crime.

| CrimeLab2                  | Grades                                    | Location       | Time             | Dates    | Fees  | Min/Max |
|----------------------------|---|----------------|------------------|----------|-------|---------|
| <a href="#">ENROLL NOW</a> | Entering 4 <sup>th</sup> -6 <sup>th</sup> | Tarwater Elem. | 10:15 am - 12 pm | 6/3-6/21 | \$160 | 15/20   |



**Lab Rats:** This class is designed for students entering 3<sup>rd</sup> through 6<sup>th</sup> grades. No supplies needed. Let's explore the fun world of science. In this class, students use the inquiry method to complete fun, hands-on experiments. Students create a hypothesis and complete a lab sheet while inquiring about the endless possibilities of science. Some experiments may include self-\$160zing soda, milk and food coloring mixtures, and how to make an egg float (just to name a few). They will explore the world around them and learn all at the same time.

| LabRats1                   | Grades                                    | Location       | Time               | Dates    | Fees  | Min/Max |
|----------------------------|---|----------------|--------------------|----------|-------|---------|
| <a href="#">ENROLL NOW</a> | Entering 3 <sup>rd</sup> -6 <sup>th</sup> | Tarwater Elem. | 8:25 am - 10:10 am | 6/3-6/21 | \$160 | 15/20   |



**STEM Program: (A)** This class is designed for students entering 4<sup>th</sup> through 6<sup>th</sup> grades. Have you ever wondered how a pendulum works, or a roller coaster is built, or even how to launch a rocket? This class will answer all these questions and more. This class is designed for students who want to learn about energy, space, and water through a comprehensive STEM (Science, Technology, Engineering and Mathematics) curriculum. Students will construct robust models and obtain an in-depth understanding

of the world around us.

| STEM A                     | Grades                                    | Location       | Time            | Dates    | Fees  | Min/Max |
|----------------------------|---|----------------|-----------------|----------|-------|---------|
| <a href="#">ENROLL NOW</a> | Entering 4 <sup>th</sup> -6 <sup>th</sup> | Tarwater Elem. | 8:25 am - 12 pm | 6/3-6/21 | \$300 | 15/20   |



**Digits, Dice, and Dominoes:** This class is designed for students entering 1<sup>st</sup> or 2<sup>nd</sup> grades. Have fun practicing math concepts through hands-on games and activities. This class is an exciting way to investigate and review math concepts aligned to or with state standards. Come join this class and let's explore the math world!

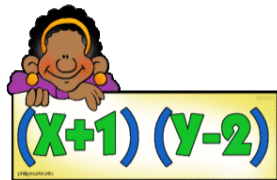
| Digits1                    | Grades                                    | Location       | Time                | Dates    | Fees  | Min/Max |
|----------------------------|---|----------------|---------------------|----------|-------|---------|
| <a href="#">ENROLL NOW</a> | Entering 1 <sup>st</sup> -2 <sup>nd</sup> | Tarwater Elem. | 10:15 am - 12:00 pm | 6/3-6/21 | \$160 | 15/20   |





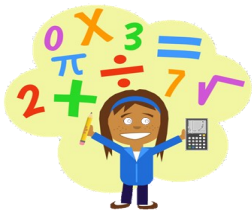
**Fun with Fractions:** This class is designed for students entering 5<sup>th</sup> or 6<sup>th</sup> grade. Did you know that 80 percent of the math concepts taught in 5<sup>th</sup> and 6<sup>th</sup> grade involve fractions? Enroll in this class to become well rounded in fractions. This class is designed to review concepts such as comparing fractions, identifying equivalent fractions, adding, subtracting, multiplying and dividing fractions with like and unlike denominators. Students will also solve real world problems using fractions as well as comparing equivalent fractions and decomposing fractions.

| Fractions                  | Grades                                    | Location       | Time               | Dates    | Fees  | Min/Max |
|----------------------------|---|----------------|--------------------|----------|-------|---------|
| <a href="#">ENROLL NOW</a> | Entering 5 <sup>th</sup> -6 <sup>th</sup> | Tarwater Elem. | 8:25 am - 10:10 am | 6/3-6/21 | \$160 | 15/20   |



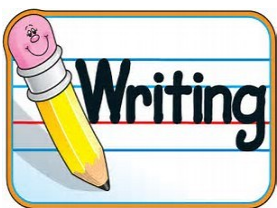
**Intro to algebra:** This class is designed for students entering 5<sup>th</sup> or 6<sup>th</sup> grade. A+B=Learning for you!! This class is designed to introduce students to the concept of variables within equations. This class will explore the fundamental principles of algebra. Concepts such as basic algebraic formulas, simplifying expressions, integers and graphic representations associated with variables will be introduced in this class. Your child will come away with the basic knowledge of algebra that will help them succeed in their future courses. (Note: if you are looking for math review, please see *Enrichment Math*)

| Algebra                    | Grades                                    | Location       | Time                | Dates    | Fees  | Min/Max |
|----------------------------|---|----------------|---------------------|----------|-------|---------|
| <a href="#">ENROLL NOW</a> | Entering 5 <sup>th</sup> -6 <sup>th</sup> | Tarwater Elem. | 10:15 am - 12:00 pm | 6/3-6/21 | \$160 | 15/20   |



**Enrichment Math:** This class is for students entering 2nd or 3rd grades. Is your child a whiz and can't get enough of math? This class is designed for students who have mastered their grade level math and want to enhance their depth of knowledge. Students are introduced to complex problems involving real world situations. Working collaboratively, students will solve problems using an inquiry method of exploration.

| EnrichMath3                | Grades                                    | Location       | Time               | Dates    | Fees  | Min/Max |
|----------------------------|---|----------------|--------------------|----------|-------|---------|
| <a href="#">ENROLL NOW</a> | Entering 2 <sup>nd</sup> -3 <sup>rd</sup> | Tarwater Elem. | 8:25 am - 10:10 am | 6/3-6/21 | \$160 | 15/20   |



**Creative Writing:** This class is designed for students entering 2nd through 6th grades. Shel Silverstein, Dave Pilkey, and Gordon Korman all started writing when they were young. Is your child filled with stories? Do they love telling them, but then have a difficult time when it comes to writing? Students will work through the writing process to create several short stories. They will also learn to choose interesting words to make their papers sound more imaginative.

| Writing1, Writing2         | Grades                                    | Location       | Time               | Dates    | Fees  | Min/Max |
|----------------------------|---|----------------|--------------------|----------|-------|---------|
| <a href="#">ENROLL NOW</a> | Entering 2 <sup>nd</sup> -3 <sup>rd</sup> | Tarwater Elem. | 10:15 am - 12 pm   | 6/3-6/21 | \$160 | 15/20   |
| <a href="#">ENROLL NOW</a> | Entering 4 <sup>th</sup> -6 <sup>th</sup> | Tarwater Elem. | 8:25 am - 10:10 am | 6/3-6/21 | \$160 | 15/20   |



**Kinder Ready:** This course is designed for students entering kindergarten. Students are introduced to early concepts in reading, writing, and math. Students also learn school rules while participating in fun activities with new friends. Students will also engage in hands-on activities to help them achieve academic success.

| Kinder1, Kinder2           | Grades     | Location       | Time            | Dates    | Fees  | Min/Max |
|----------------------------|------------|----------------|-----------------|----------|-------|---------|
| <a href="#">ENROLL NOW</a> | Entering K | Tarwater Elem. | 8:25 am - 12 pm | 6/3-6/21 | \$300 | 15/20   |

**Jumpstart to 1st Grade:** This class is designed for students entering 1st grade. This First grade readiness program will reinforce kindergarten skills and preview skills for First grade. Students will participate in great literature and extension activities, fluency practice, hands on math games emphasizing number sense and much more! Each session will provide unique content.



| Jumpstart1                 | Grades                   | Location       | Time               | Dates    | Fees  | Min/Max |
|----------------------------|--------------------------|----------------|--------------------|----------|-------|---------|
| <a href="#">ENROLL NOW</a> | Entering 1 <sup>st</sup> | Tarwater Elem. | 8:25 am - 10:10 am | 6/3-6/21 | \$160 | 15/20   |



**Fitness Fun:** This class is for students entering 1st through 3rd grades. Need to get those wiggles out this summer? Students will rotate among stations to improve agility, flexibility, and overall health. Some stations will include: throwing skills, cooperative activities, relays, yoga stretches, and so much more. Students will also play games such as soccer, volleyball, and basketball. If you want to make sure you're in the best shape ever, this is the class

for you!

| FitnessFun2                | Grades                                    | Location       | Time             | Dates    | Fees  | Min/Max |
|----------------------------|---|----------------|------------------|----------|-------|---------|
| <a href="#">ENROLL NOW</a> | Entering 1 <sup>st</sup> -3 <sup>rd</sup> | Tarwater Elem. | 10:15 am - 12 pm | 6/3-6/21 | \$160 | 15/20   |



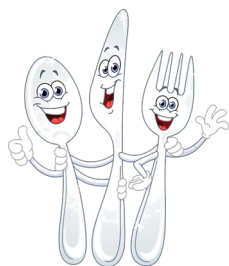
**Around the World:** This course is designed for students entering 1st through 6th grades. Wishing you could travel this summer, but don't have a passport? No problem! Students will discover the world beyond Arizona. Travel to Italy, Japan, Brazil, and Canada and other great destinations. Students will create a travel journal, learn about the customs and traditions, famous buildings, history and people of each destination. Join this class and share your 'travel' stories with friends and family upon your return.

| World                      | Grades                                    | Location       | Time               | Dates    | Fees  | Min/Max |
|----------------------------|---|----------------|--------------------|----------|-------|---------|
| <a href="#">ENROLL NOW</a> | K-2 <sup>nd</sup>                         | Tarwater Elem. | 8:25 am - 10:10 am | 6/3-6/21 | \$160 | 15/20   |
| <a href="#">ENROLL NOW</a> | Entering 3 <sup>rd</sup> -6 <sup>th</sup> | Tarwater Elem. | 10:15 am - 12 pm   | 6/3-6/21 | \$160 | 15/20   |



**Improv:** This class is designed for students entering 5th through 8th grades. This program will bring out the humor in all children through the fun and excitement of improvisational comedy. Improvisation will help boost confidence, build critical thinking skills, and bring out some really cool creativity. Students will build confidence, focus, and learn to think on their feet. They will also develop listening, public speaking, and teamwork skills. Come and let your imagination be sparked!

| Improv1                    | Grades                                    | Location       | Time             | Dates    | Fees  | Min/Max |
|----------------------------|---|----------------|------------------|----------|-------|---------|
| <a href="#">ENROLL NOW</a> | Entering 5 <sup>th</sup> -7 <sup>th</sup> | Tarwater Elem. | 10:15 am - 12 pm | 6/3-6/21 | \$160 | 15/20   |



**Fun with Food:** This course is designed for students in 1st through 6th grades. Oodles of noodles, pretzels, cookies, and snacks of all kinds, these are a few of the items we'll create! Not only will you produce, delicious treats, you'll get to eat and write about them. At the conclusion of the course, students walk away with a personalized cookbook of recipes and observations to share with family and friends. (Note: stove or ovens will not be

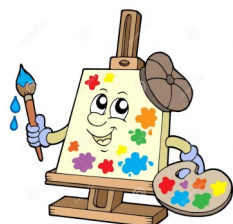
used)

| Food1, Food2               | Grades                                    | Location       | Time               | Dates    | Fees  | Min/Max |
|----------------------------|---|----------------|--------------------|----------|-------|---------|
| <a href="#">ENROLL NOW</a> | Entering 1 <sup>st</sup> -3 <sup>rd</sup> | Tarwater Elem. | 8:25 am - 10:10 am | 6/3-6/21 | \$160 | 15/20   |
| <a href="#">ENROLL NOW</a> | Entering 4 <sup>th</sup> -6 <sup>th</sup> | Tarwater Elem. | 10:15 am - 12 pm   | 6/3-6/21 | \$160 | 15/20   |



**Spanish for Beginners:** This class is designed for students in Kindergarten through 3rd grades. In this course students learn basic Spanish vocabulary such as colors, numbers, greetings, food, animals, body parts and common vocabulary used in everyday conversations. Don't miss this excellent opportunity for your child to learn the basics of Spanish.

| Spanish1,<br>Spanish2      | Grades                                     | Location       | Time               | Dates    | Fees  | Min/<br>Max |
|----------------------------|--|----------------|--------------------|----------|-------|-------------|
| <a href="#">ENROLL NOW</a> | K-1 <sup>st</sup>                          | Tarwater Elem. | 8:25 am - 10:10 am | 6/3-6/21 | \$160 | 15/20       |
| <a href="#">ENROLL NOW</a> | Entering 2 <sup>nd</sup> - 3 <sup>rd</sup> | Tarwater Elem. | 10:15 am - 12 pm   | 6/3-6/21 | \$160 | 15/20       |



**Visual Arts:** This class is designed for students entering 4<sup>th</sup> through 6<sup>th</sup> grades. Through the visual arts program, students learn to recognize their natural creativity and increase their ability to communicate through visual language. This class will explore different artists who have impacted our world view through the expression of their art. Students will learn about the artists and then practice the particular techniques used by the artists. Students will also have an opportunity for \$160 expression in other art activities.

| VisualArts                 | Grades                                    | Location       | Time             | Dates    | Fees  | Min/<br>Max |
|----------------------------|---|----------------|------------------|----------|-------|-------------|
| <a href="#">ENROLL NOW</a> | Entering 4 <sup>th</sup> -6 <sup>th</sup> | Tarwater Elem. | 10:15 am - 12 pm | 6/3-6/21 | \$160 | 15/20       |



**Imagination Station:** This class is designed for students entering 1st through 3rd grades. Prepare your mind and hands to create imaginative art projects. Students will use paint, clay, string, yarn, noodles, balloons, etc. to make masterpieces to take home.

| Imagination                | Grades                                    | Location       | Time               | Dates    | Fees  | Min/<br>Max |
|----------------------------|---|----------------|--------------------|----------|-------|-------------|
| <a href="#">ENROLL NOW</a> | Entering 1 <sup>st</sup> -3 <sup>rd</sup> | Tarwater Elem. | 8:25 am - 10:10 am | 6/3-6/21 | \$160 | 15/20       |





**Yoga:** This class is for students entering Kindergarten through 6th grades. Students will learn breathing techniques, proper alignment, balance, and overall mind, body awareness. The basics of yoga are taught throughout the course. Please bring a beach towel/yoga mat and water .

| Yoga1,<br>Yoga2,Yoga3      | Grades                     | Location       | Time              | Dates     | Fees | Min/<br>Max |
|----------------------------|----------------------------|----------------|-------------------|-----------|------|-------------|
| <a href="#">ENROLL NOW</a> | Entering K-6 <sup>th</sup> | Tarwater Elem. | 7:50 am - 8:20 am | 6/3-6/7   | \$25 | 15/20       |
| <a href="#">ENROLL NOW</a> | Entering K-6 <sup>th</sup> | Tarwater Elem. | 7:50 am - 8:20 am | 6/10-6/14 | \$25 | 15/20       |
| <a href="#">ENROLL NOW</a> | Entering K-6 <sup>th</sup> | Tarwater Elem. | 7:50 am - 8:20 am | 6/17-6/21 | \$25 | 15/20       |



**Zumba:** This class is for students Kindergarten through 6th grades. Stay physically active during the summer by joining Zumba dance fitness party. While dancing to the beat, we'll combine several elements of fitness including cardio, muscle conditioning, and balance to keep you on track for a healthy fit you!

| Zumba1,<br>Zumba2,<br>Zumba3 | Grades                     | Location       | Time              | Dates     | Fees | Min/<br>Max |
|------------------------------|----------------------------|----------------|-------------------|-----------|------|-------------|
| <a href="#">ENROLL NOW</a>   | Entering K-6 <sup>th</sup> | Tarwater Elem. | 7:50 am - 8:20 am | 6/3-6/7   | \$25 | 15/20       |
| <a href="#">ENROLL NOW</a>   | Entering K-6 <sup>th</sup> | Tarwater Elem. | 7:50 am - 8:20 am | 6/10-6/14 | \$25 | 15/20       |
| <a href="#">ENROLL NOW</a>   | Entering K-6 <sup>th</sup> | Tarwater Elem. | 7:50 am - 8:20 am | 6/17-6/21 | \$25 | 15/20       |

## CTA Session 1 Spalding/Reading

The following classes are for students entering a CTA elementary school. Students must already be registered at a CTA to enroll in these classes.



**CTA Kinder Intro to Spalding: 8:25am– 10:10am** This class is recommended for students entering CTA kindergarten. Students will work on skills such as letter sounds, Spalding handwriting and first sound fluency. This course will give your child a beginning foundation to what they will be learning in Kindergarten. **CTA Kinder Intro to Math: 10:15am– 12:00pm** This class is recommended for students entering CTA kindergarten. Students will work on skills such as counting, shapes, numbers, and problem solving. This course will give your child a beginning foundation to what they will be learning in Kindergarten.

| CTAKinderELA,<br>CTAKinderMath          | Grades          | Location       | Time               | Dates    | Fees  | Min/<br>Max |
|---|-----------------|----------------|--------------------|----------|-------|-------------|
| <a href="#">ENROLL (ELA &amp; Math)</a> | Entering Kinder | Tarwater Elem. | 8:25 am - 12:00 pm | 6/3-6/21 | \$300 | 15/20       |

**Spalding 1st Grade:** This class is recommended for CTA students entering 1st grade. Students will review skills such as Spalding handwriting, phonograms 1-70, spelling dictation, spelling rule application, and other language arts content to support reading and writing such as fiction and non-fiction text elements (characters, setting, and major events in a story or article) and writing through various activities that will support sentence structure.

**1st Grade Math:** This class is recommended for CTA students entering 1st grade. Students will review skills such as place value, counting to 100 (by 1's, 2's, 5's, 10's etc.) addition and subtraction, word problems, time and money. Students will practice addition and subtraction math facts daily to increase speed and accuracy.

facts daily to help with speed and accuracy.

| CTARdg1,<br>CTAMath1          | Grades                   | Location       | Time               | Dates    | Fees  | Min/<br>Max |
|-------------------------------|--------------------------|----------------|--------------------|----------|-------|-------------|
| <a href="#">ENROLL (Rdg)</a>  | Entering 1 <sup>st</sup> | Tarwater Elem. | 8:25 am - 10:10 am | 6/3-6/21 | \$160 | 15/20       |
| <a href="#">ENROLL (Math)</a> | Entering 1 <sup>st</sup> | Tarwater Elem. | 10:15 am - 12 pm   | 6/3-6/21 | \$160 | 15/20       |



**Spalding 2nd Grade:** This class is recommended for CTA students entering 2nd grade. Students will review skills such as Spalding handwriting, phonograms 1-70, spelling dictation, spelling rule application, and other language arts content to support reading and writing such as fiction and non-fiction text elements, creating great sentences and forming paragraphs.

**2nd Grade Math:** This class is recommended for CTA students entering 2nd grade. Students will review skills such as addition and subtraction with 3 whole numbers, word problems, adding 2-digit numbers, finding a missing addend, measurement, fractions, time, and money. Students will practice addition and subtraction math facts daily to increase speed and accuracy.

| CTARdg2,<br>CTAMath2          | Grades       | Location       | Time               | Dates    | Fees  | Min/<br>Max |
|-------------------------------|--------------|----------------|--------------------|----------|-------|-------------|
| <a href="#">ENROLL (Rdg)</a>  | Entering 2nd | Tarwater Elem. | 8:25 am - 10:10 am | 6/3-6/21 | \$160 | 15/20       |
| <a href="#">ENROLL (Math)</a> | Entering 2nd | Tarwater Elem. | 10:15 am - 12 pm   | 6/3-6/21 | \$160 | 15/20       |



**Spalding 3rd Grade:** This class is recommended for CTA students entering 3rd grade. Students will review skills such as Spalding cursive handwriting, phonograms 1-70, spelling dictation, spelling rule application, and other language arts content to support reading and writing such as asking and answering questions (who, what, when, where, why, how) to identify the main idea of a text, and creating a fluid paragraph.

**3rd Grade Math:** This class is recommended for CTA students entering 3rd grade. Students will review skills such as addition and subtraction of multi-digit numbers with regrouping, 2 step addition and subtraction word problems, multiplying one digit by one-digit numbers, rounding, fractions, elapsed time, and money. Students will practice math facts daily to increase speed and accuracy.

| CTARdg3,<br>CTAMath3          | Grades       | Location       | Time               | Dates    | Fees  | Min/<br>Max |
|-------------------------------|--------------|----------------|--------------------|----------|-------|-------------|
| <a href="#">ENROLL (Rdg)</a>  | Entering 3rd | Tarwater Elem. | 8:25 am - 10:10 am | 6/3-6/21 | \$160 | 15/20       |
| <a href="#">ENROLL (Math)</a> | Entering 3rd | Tarwater Elem. | 10:15 am - 12 pm   | 6/3-6/21 | \$160 | 15/20       |



**Spalding 4th Grade:** This class is recommended for CTA students entering 4th grade. Students will review skills such as Spalding cursive handwriting, phonograms 1-70, spelling dictation, spelling rule application, and other language arts content to support reading and writing such as asking and answering text dependent questions, characters of fables, myths and legends, and the main idea of a text with supporting details as well as the writing process.

**4th Grade Math:** This class is recommended for CTA students entering 4th grade. Students will review skills such as multiplication and division word problems, adding and subtracting decimal numbers, finding a missing number within a multiplication or division problem, and explain strategies used to solve multi-step problems. Students will practice math facts daily to increase speed and accuracy.

| CTARdg4,<br>CTAMath4          | Grades       | Location       | Time               | Dates    | Fees  | Min/<br>Max |
|-------------------------------|--------------|----------------|--------------------|----------|-------|-------------|
| <a href="#">ENROLL (Rdg)</a>  | Entering 4th | Tarwater Elem. | 8:25 am - 10:10 am | 6/3-6/21 | \$160 | 15/20       |
| <a href="#">ENROLL (Math)</a> | Entering 4th | Tarwater Elem. | 10:15 am - 12 pm   | 6/3-6/21 | \$160 | 15/20       |



**Spalding 5th and 6th Grade:** This class is recommended for CTA students entering 5th or 6th grade. Students will review skills such as Spalding cursive handwriting, phonograms 1-70, spelling dictation, spelling rule application, and other language arts content to support reading and writing such as prefix/suffix/base word meanings, determining the main idea of a story, analyzing different text types, and how to write a summary.

**5th and 6th Grade Math:** This class is recommended for CTA students entering 5th or 6th grade. Students will review skills such as solving multi-step word problems with explanations, estimation including fractions and decimal numbers, identify and explain the properties of addition, subtraction, multiplication and division, find greatest common factors, least common multiples, Students will deepen their understanding of fractions and decimals by adding, subtracting, multiplying and dividing with like and unlike denominators, comparing and ordering from least to greatest and greatest to least.

| CTARdg56,<br>CTAMath56        | Grades                                    | Location       | Time               | Dates    | Fees  | Min/<br>Max |
|-------------------------------|---|----------------|--------------------|----------|-------|-------------|
| <a href="#">ENROLL (Rdg)</a>  | Entering 5 <sup>th</sup> -6 <sup>th</sup> | Tarwater Elem. | 8:25 am - 10:10 am | 6/3-6/21 | \$160 | 15/20       |
| <a href="#">ENROLL (Math)</a> | Entering 5 <sup>th</sup> -6 <sup>th</sup> | Tarwater Elem. | 10:15 am - 12 pm   | 6/3-6/21 | \$160 | 15/20       |

**Reminder:** The above CTA classes are for students entering a CTA elementary school ONLY. Students MUST already be registered at a CTA to enroll.

**\*\*Please note that the above class descriptions are examples of concepts reviewed. Our teachers will adjust the curriculum to meet the needs of the class and current standards where necessary. \*\***

For questions regarding classes, please contact Liana Claeson  
[Claeson.Liana@CUSD80.com](mailto:Claeson.Liana@CUSD80.com)

**Summer Learning Recovery**– Classes focus on ELA, Math and Integrated problem-based learning experiences. Enroll in the grade level that corresponds with your grade in 2023-2024. Teacher recommendation suggested but not required. **Program:** Mon.- Thurs. June 3rd - June 20th. **\*\*Please note that this program is open to current K-6 CUSD students only. \*\*** Summer Recovery Coordinator contact: Nicole Leone-Dunham @ [LeoneDunham.Nicole@cUSD80.com](mailto:LeoneDunham.Nicole@cUSD80.com).

| RECOVERY               | Grades                    | Location       | Time               | Dates    | Fees  | Min/<br>Max |
|------------------------|---------------------------|----------------|--------------------|----------|-------|-------------|
| <a href="#">ENROLL</a> | Current K-6 <sup>th</sup> | Tarwater Elem. | 8:30 am - 11:30 am | 6/3-6/20 | \$250 | 15/20       |

